

PETCORE EUROPE



www.petcore-europe.org





Spain, GRANADA

25 - 26 JUNE 2024

**Towards circularity of
PET thermoformed
packaging**

**Meet up with experts and PET Thermoforms industry
leaders at our Thermoforms Conference 2024**

www.petcore-europe.org

PET market status in EUROPE 2022

(1)

- 5 million tons have been launched in European market in 2022
- 3 million tons have been collected (60%)
- 2.8 million tons for bottles
- Only a few countries collected trays in 2022. More markets are setting up
- PET-based trays contain on average around 44% (ICIS 2022 market) vs 52% (Eunomia 2020 market)
- Besides separate collection growing trends and proper sorting of trays and other PET sheet-based products, design for recycling is a major tool to boost their circularity

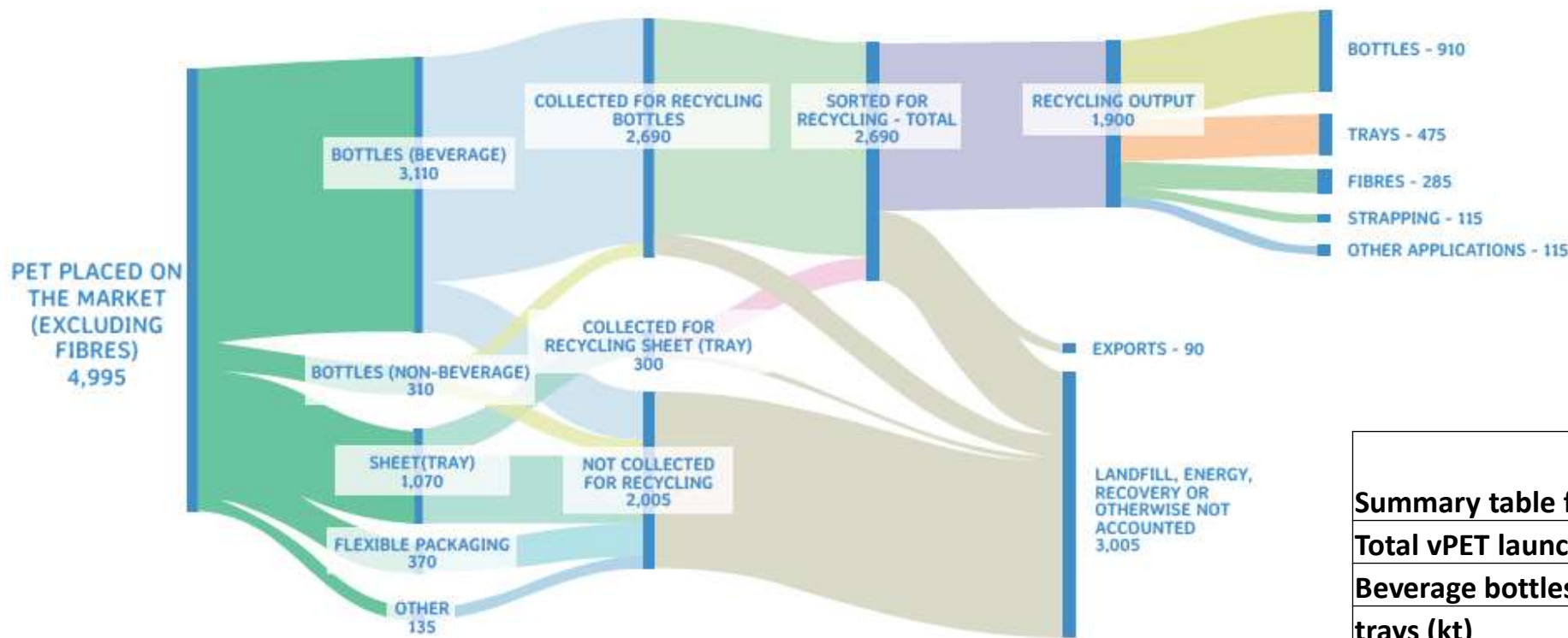
Sources:

(1) PET Market in Europe. State of play. ICIS 2024





European PET and rPET material flow in 2022



Summary table for 2022	rPET % content
Total vPET launched (kt)	
Beverage bottles (kt)	24%
trays (kt)	44%
Used for recycling - downcycling (kt)	38%
Lanfill - Energy recovery	62%

Sources:
(1) PET Market in Europe. State of play. ICIS 2024





Installed recycling capacity for tray (tons/year)

Country	2022	2025
Belgium		10,500
France	10,000	21,900
Italy		31,100
The Netherlands	25,000	65,000
Romania		10,000
Spain	22,000	167,000
Total	57,000	305,500




Sources:
(1) PET Market in Europe. State of play. ICIS 2024



Recyclability Evaluation Platforms (EPBP and TCEP)



Drive and promote the circularity in the PET bottle and trays value chain, providing the industry design guidelines and package/technology assessments.

YES Full compatibility – materials that passed the testing protocols with no negative impact	CONDITIONAL Limited compatibility – materials that passed the testing protocols if certain conditions are met	NO Low compatibility – materials that failed the testing protocols
		



Recyclability Evaluation Platforms (EPBP and TCEP)



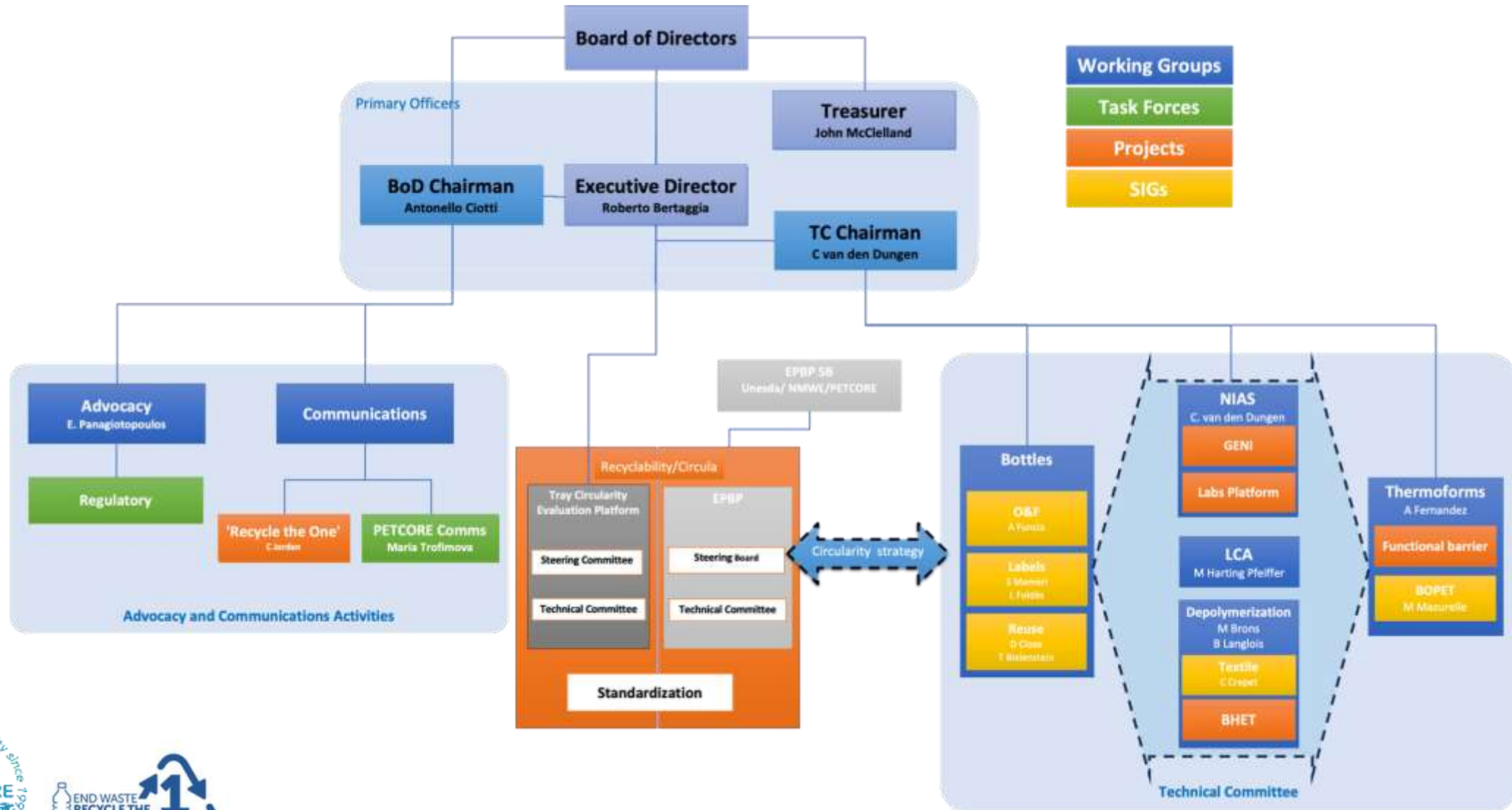
- EPBP and TCEP strongly encourage all companies to bring their new PET bottle - tray solutions to the platforms in order to get an objective third party assessment of their recyclability.



- The platforms rely on strong processes and protocols for the assessments. As a result, these assessments are scientifically relevant, trustful and independent from a single sector's views. The assessment bodies cover the full value chain experience and expertise.



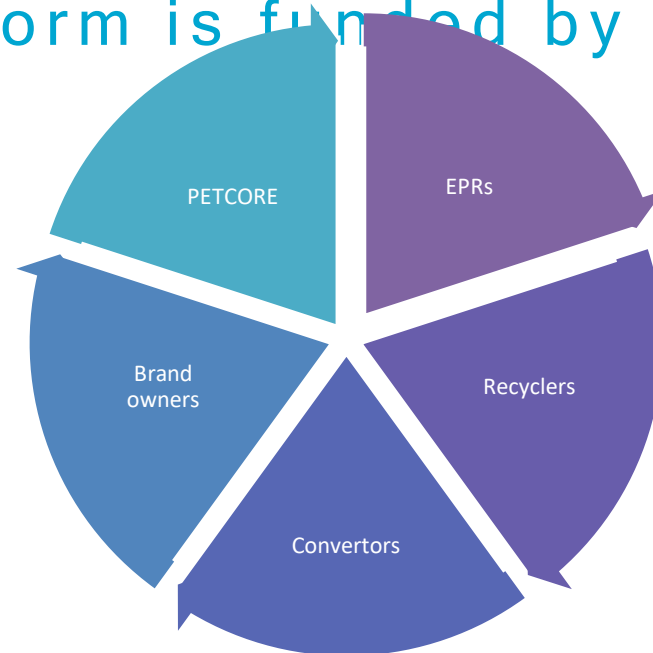
PETCORE EUROPE ORGANISATION



TCEP - Tray Circularity Evaluation

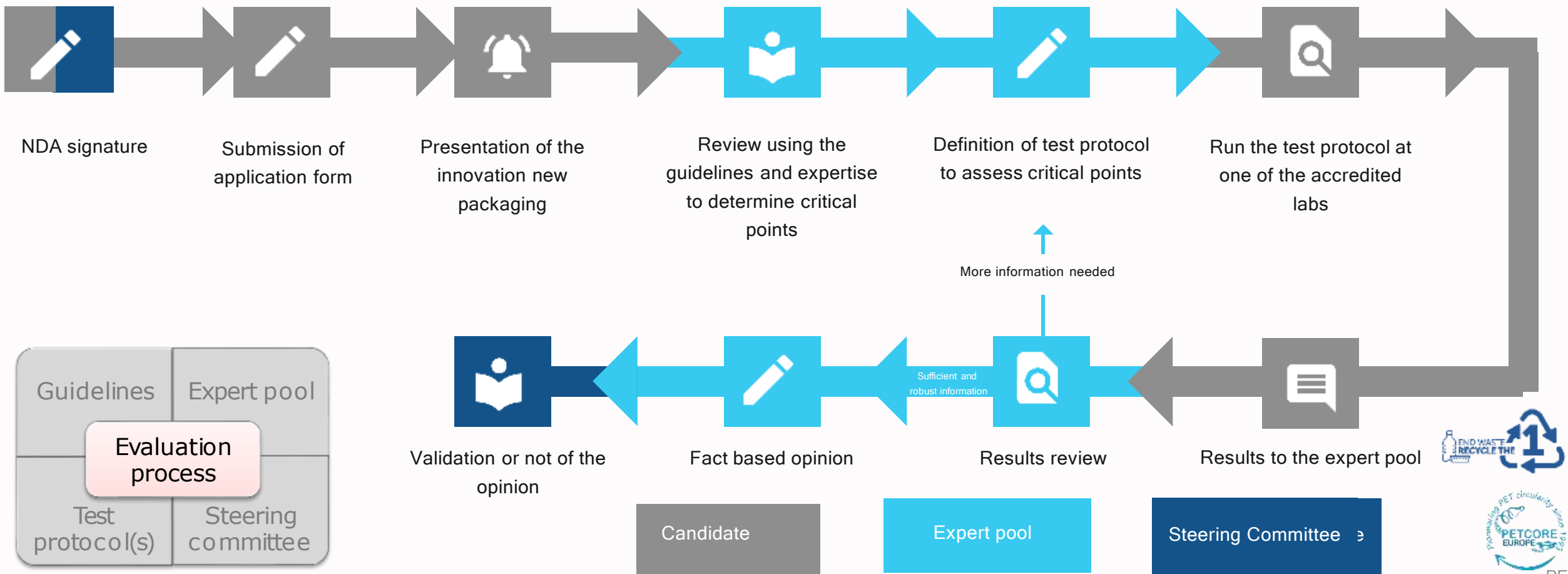
Platform

The Platform consists of technical experts in the field of PET thermoforms design, production and recycling, whose only objective is the evaluation of existing technologies and innovation and providing an independent and confidential assessment of their impact on the PET thermoforms recycling processes across Europe. The platform is funded by Petcore Europe



Recyclability Evaluation Platforms Evaluation

process



TCEP Expert Teams



	Steering Committee	Technical Committee
EPR	Luca Stamare (Corepla)	SABATHIER Chloé (CITEO)
	Paul East (Recoup)	Luca Stamare (Corepla)
		Hagen Helen (Valorplast)
PETCORE	Jose-Antonio Alacron	Jose-Antonio Alacron (Petcore)
	Roberto Bertaggia	Raphaël Jaumotte (Petcore)
	Raphaël Jaumotte	
PETCORE - Gen Sec	Argiris Dabanlis	Argiris Dabanlis
Manufacturers	Ana Fernandez - Ben Elkington (KP)	Simone Tirelli (Faerch)
	Siobhan Parks (Sharpak - Guillin)	Samuel Pardo (KP)
		Matthias Mazurelle (TPL)
Recyclers	Mercedes Gomez- Paniagua (Ecoense)	Ermis Panagiotopoulos (Indorama Ventures)
	Aron Damen (Cirrec)	Sergio Collado (Sullayr)

Steering Committee

- Sets the Vision and the Mission
- Adjusts the structure and assessment procedure of the TCEP
- Defines priorities of the Platform (strategic level);
- Reviews and validate the recommendations of the Technical Committee;
- Approves the external communication.

Technical Committee

- Assesses the impact on recyclability of new PET thermoforms concepts
- Creates, recommends and publishes harmonized European guidelines for PET tray recyclability and develops testing protocols
- Issues technical opinions following a review of and summarizing the test results, conclusions and recommendations (incl. communication)
- Manages the communication with the Applicant

TCEP - Tray Circularity Evaluation Platform



You can find us:

- <https://www.tcep-europe.org/>
- <https://www.petcore-europe.org/recyclability-evaluation-platforms.html>

TCEP - Tray Circularity Evaluation Platform

1. Countersign the Secrecy Agreement between Petcore Europe and the Applicant.
This is the same for all applications
2. Fill in the application form
3. Both documents can be downloaded <https://www.petcore-europe.org/recyclability-evaluation-platforms.html> or ask us to send them to you

Important note:

Applicants may request exclusion for members of the TC in case they consider them as competitors

Applicant representatives in the TC are excluded from the panel when their application is discussed



TCEP - Tray Circularity Evaluation Platform



ENDORSEMENT LETTER

Endorsement

Brussels, XXXXXX

The Technical Committee of the Tray Circularity Evaluation Platform (TCEP) was requested to assess the impact of:

XXXXXXXXXXXXXXXXXXXXXXXXXXXX

to be introduced in the PET tray market, market guaranteeing compatibility with actual European PET thermoforms recycling.

Based on the TCEP assessment's outcome and current market knowledge in 2022, the Tray Circularity Evaluation Platform (TCEP) concludes that:

The use XXXXXXXXXXXXXXXXXXXXXXXX will not have a negative impact on current European PET tray Recycling streams. Thus, an endorsement is given for a market penetration up to XXXXXXXXXXXXXXXX%.

TCEP will continue to monitor any effect of the materials listed above on EU recycling streams. |

Upon prior notice to applicant the TCEP reserves the right to update and change the conditions of this endorsement at any time in accordance with the most recent technologies, assessments and experience.

The Tray Circularity Evaluation Platform (TCEP) is a voluntary European industry initiative that provides PET thermoforms design guidelines for recycling, evaluates thermoform packaging solutions and technologies, and facilitates understanding of the effects of new PET thermoforms innovations on recycling process. The TCEP initiative fully supports the economic and Environmental sustainability of the European PET value chain.



TCEP - Tray Circularity Evaluation Platform

Key achievements in 2023

- Filling up or vacant seats in TC and SB assuring that all value chain expertise is represented in both bodies
- The platform has a good momentum receiving applications
- IKTR lab accreditation
- TCEP site and internal communication platform set up
- TCEP promotional leaflet development and communicated through the site and during the AC2024
- TCEP support to CEN standardization project



TCEP - Tray Circularity Evaluation Platform

2024 and beyond

- Assess applications with speed
- Based on the cumulated experience reevaluate test protocols
- Finalize the validation of Aimplast as a third accredited lab
- TCEP site improvement
- Improve communication to external environment (monthly quotes ...)

TCEP - Tray Circularity Evaluation Platform



Call to apply!

Receive and review more innovations to evaluate their suitability for endorsement

Contribute to grow PET thermoforms recycling stream through application of DfR



Avenue de Broqueville 12, 1150
Brussels, Belgium



+32 (0) 2 315 24 88



management@petcore-europe.org



www.petcore-europe.org



Annual Conference 2024

www.petcoreeuropeannualconference.eu



Communications Campaign

www.recycletheone.com



Follow us on social media to stay updated:

